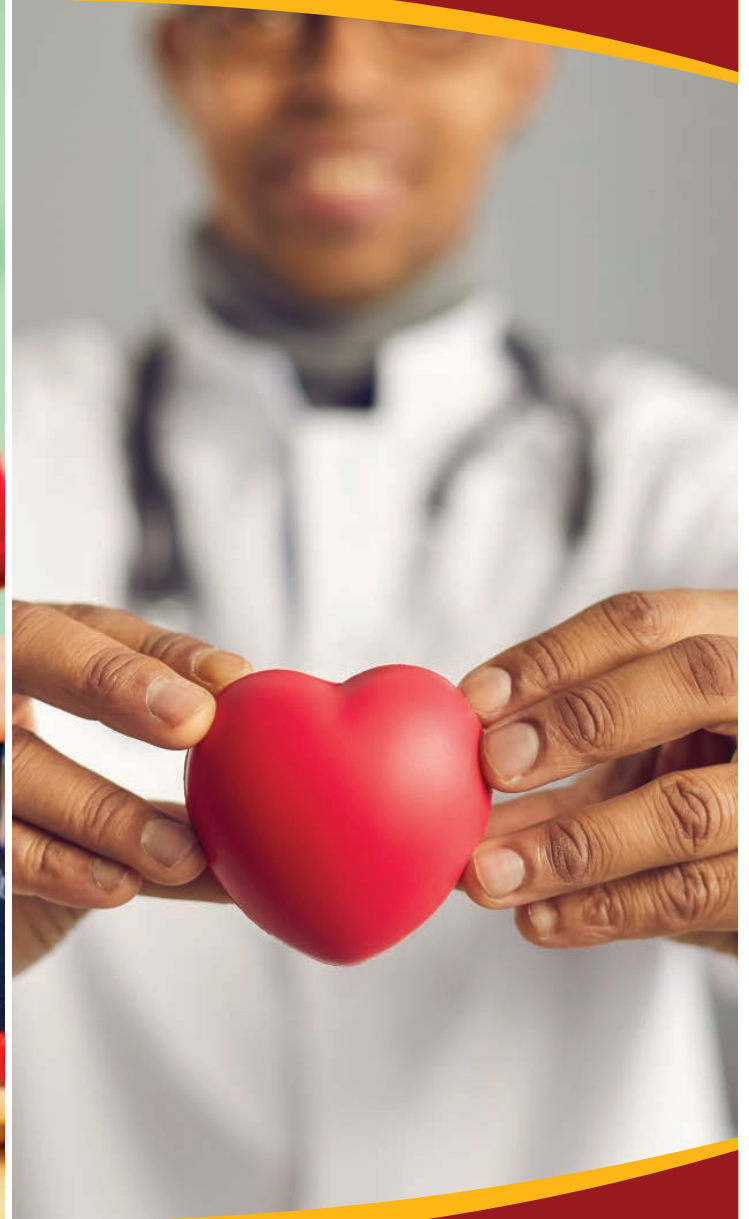




Cayman Islands
Government

Illness, Disability and Health Insurance





The Page is intentionally left blank



Table 5.1A: Incidence of Medically Diagnosed Illnesses by Type of Illness, Sex and Status, 2021

Illness	Total			Caymanian			Non-Caymanian		
	Total	Male	Female	Total	Male	Female	Total	Male	Female
Total Responses	65,760	33,060	32,680	35,613	17,018	18,580	30,147	16,043	14,100
Cataract	1,305	610	695	974	423	551	331	187	143
Glaucoma	381	181	199	319	154	165	62	27	35
Diabetes	2,995	1,362	1,632	2,301	1,010	1,290	695	352	343
Meningitis	49	24	24	33	16	16	16	8	8
Congenital Brain Injury	45	20	24	40	17	22	5	3	2
Stroke	384	203	181	347	181	166	38	22	15
Dementia	182	65	117	159	59	100	23	6	17
Arthritis	1,439	408	1,031	1,244	352	892	195	56	139
Neonatal Brain Injury	23	11	12	18	9	9	5	2	3
Head Injury	123	74	49	97	54	43	26	20	6
Spinal Cord Injury	247	103	144	210	82	127	38	20	17
Muscular Dystrophy	43	21	21	37	18	18	6	3	3
Alzheimer's Disease	193	82	111	147	61	86	46	21	24
Intellectual Disability	202	119	83	169	98	71	34	21	12
Autism/Attention Deficit Hyperactivity Disorder	570	387	183	470	325	144	100	61	39
None	57,387	29,298	28,073	28,940	14,109	14,819	28,448	15,189	13,255
DK/NS	189	91	98	110	49	60	79	42	38
Total will not sum due to multiple response question and DK/NS									



Table 5.1B: Incidence of Medically Diagnosed Illnesses by Type of Illness per 1000 Population, Sex and Status, 2021

Illness	Total			Caymanian			Non-Caymanian		
	Total	Male	Female	Total	Male	Female	Total	Male	Female
Population (Aged 5+)	64,746	32,745	31,980	34,501	16,629	17,856	30,245	16,116	14,124
Cataract	20.2	18.6	21.7	28.2	25.4	30.9	10.9	11.6	10.2
Glaucoma	5.9	5.5	6.2	9.3	9.2	9.2	2.1	1.7	2.4
Diabetes	46.3	41.6	51.0	66.7	60.7	72.2	23.0	21.8	24.3
Meningitis	0.8	0.7	0.8	0.9	1.0	0.9	0.5	0.5	0.6
Congenital Brain Injury	0.7	0.6	0.8	1.1	1.0	1.3	0.2	0.2	0.1
Stroke	5.9	6.2	5.7	10.1	10.9	9.3	1.2	1.4	1.1
Dementia	2.8	2.0	3.7	4.6	3.5	5.6	0.8	0.4	1.2
Arthritis	22.2	12.5	32.3	36.1	21.2	50.0	6.5	3.5	9.9
Neonatal Brain Injury	0.4	0.3	0.4	0.5	0.6	0.5	0.2	0.1	0.2
Head Injury	1.9	2.3	1.5	2.8	3.2	2.4	0.9	1.3	0.4
Spinal Cord Injury	3.8	3.1	4.5	6.1	5.0	7.1	1.2	1.3	1.2
Muscular Dystrophy	0.7	0.7	0.7	1.1	1.1	1.0	0.2	0.2	0.2
Alzheimer's Disease	3.0	2.5	3.5	4.3	3.7	4.8	1.5	1.3	1.7
Intellectual Disability	3.1	3.6	2.6	4.9	5.9	4.0	1.1	1.3	0.9
Autism/Attention Deficit Hyperactivity Disorder	8.8	11.8	5.7	13.6	19.6	8.1	3.3	3.8	2.7
None	886.3	894.7	877.8	838.8	848.4	829.9	940.6	942.5	938.4
DK/NS	2.9	2.8	3.1	3.2	2.9	3.4	2.6	2.6	2.7
Total will not sum due to multiple response question and DK/NS									



Cayman Islands' 2021 Census Report



Table 5.2A: George Town: Incidence of Medically Diagnosed Illnesses by Type of Illness, Sex and Status, 2021

Medically Diagnosed Illness	Total				Caymanian				Non-Caymanian			
	Total	Male	Female	DK/NS	Total	Male	Female	DK/NS	Total	Male	Female	DK/NS
George Town												
Population Aged 5+	31,786	16,467	15,304	15	13,439	6,589	6,839	10	18,348	9,878	8,465	5
Cataract	595	300	295	-	362	165	197	-	233	135	98	-
Glaucoma	155	73	80	1	122	57	64	1	33	16	16	-
Diabetes	1,217	596	620	-	848	395	454	-	368	201	167	-
Meningitis	20	9	11	-	10	4	6	-	10	5	5	-
Congenital Brain Injury	8	4	4	-	7	3	4	-	1	1	-	-
Stroke	152	83	68	-	134	73	61	-	17	10	7	-
Dementia	78	25	53	-	62	20	42	-	16	5	11	-
Arthritis	545	163	382	-	441	129	312	-	104	34	70	-
Neonatal Brain Injury	9	4	5	-	7	4	3	-	2	-	2	-
Head Injury	61	36	25	-	49	26	22	-	12	9	3	-
Spinal Cord Injury	76	32	45	-	65	26	39	-	11	5	6	-
Muscular Dystrophy	10	4	6	-	8	3	5	-	2	1	1	-
Alzheimer's Disease	75	32	44	-	51	20	31	-	24	11	13	-
Intellectual Disability	82	48	35	-	61	34	27	-	21	14	7	-
Autism/Attention Deficit Hyperactivity Disorder	213	143	69	-	162	110	52	-	51	34	17	-
None	28,688	14,952	13,725	11	11,369	5,641	5,721	7	17,319	9,311	8,004	4
DK/NS	337	176	158	3	170	76	92	2	167	100	66	1





Cayman Islands' 2021 Census Report



Table 5.2B: West Bay: Incidence of Medically Diagnosed Illnesses by Type of Illness, Sex and Status, 2021

Medically Diagnosed Illness	Total				Caymanian				Non-Caymanian			
	Total	Male	Female	DK/NS	Total	Male	Female	DK/NS	Total	Male	Female	DK/NS
West Bay												
Population Aged 5+	14,001	7,097	6,903	1	7,935	3,867	4,067	1	6,066	3,230	2,836	-
Cataract	257	118	139	-	209	93	116	-	49	25	23	-
Glaucoma	85	38	48	-	72	32	41	-	13	6	7	-
Diabetes	603	247	356	-	479	187	292	-	124	60	64	-
Meningitis	18	10	8	-	13	7	6	-	5	3	2	-
Congenital Brain Injury	24	11	13	-	21	9	12	-	3	2	1	-
Stroke	85	46	40	-	77	42	36	-	8	4	4	-
Dementia	55	21	34	-	50	21	28	-	5	-	5	-
Arthritis	350	92	258	-	310	79	231	-	40	12	27	-
Neonatal Brain Injury	5	2	3	-	5	2	3	-	-	-	-	-
Head Injury	30	17	12	-	22	12	10	-	7	5	2	-
Spinal Cord Injury	71	30	42	-	60	22	38	-	11	7	4	-
Muscular Dystrophy	8	6	2	-	6	5	1	-	2	1	1	-
Alzheimer's Disease	54	22	32	-	42	18	23	-	12	4	8	-
Intellectual Disability	58	39	19	-	53	36	17	-	5	3	2	-
Autism/Attention Deficit Hyperactivity Disorder	159	108	51	-	131	93	39	-	27	15	12	-
None	12,340	6,343	5,996	1	6,614	3,274	3,340	1	5,725	3,069	2,656	-
DK/NS	128	61	67	-	79	42	38	-	49	19	30	-





Cayman Islands' 2021 Census Report



Table 5.2C: Bodden Town: Incidence of Medically Diagnosed Illnesses by Type of Illness, Sex and Status,

Medically Diagnosed Illness	Total				Caymanian				Non-Caymanian			
	Total	Male	Female	DK/NS	Total	Male	Female	DK/NS	Total	Male	Female	DK/NS
Bodden Town												
Population Aged 5+	13,548	6,508	7,038	2	9,643	4,485	5,156	2	3,904	2,023	1,881	-
Cataract	258	112	146	-	221	91	130	-	38	21	16	-
Glaucoma	97	49	48	-	86	46	41	-	10	3	7	-
Diabetes	736	345	392	-	616	282	335	-	120	63	57	-
Meningitis	7	4	3	-	7	4	3	-	-	-	-	-
Congenital Brain Injury	10	5	5	-	9	5	4	-	1	-	1	-
Stroke	86	47	40	-	80	42	39	-	6	5	1	-
Dementia	33	14	18	-	31	13	17	-	2	1	1	-
Arthritis	290	71	219	-	261	68	193	-	28	3	25	-
Neonatal Brain Injury	8	4	4	-	5	2	3	-	3	2	1	-
Head Injury	16	9	7	-	12	5	7	-	4	4	-	-
Spinal Cord Injury	54	21	33	-	45	15	29	-	9	6	3	-
Muscular Dystrophy	13	5	8	-	12	4	8	-	1	1	-	-
Alzheimer's Disease	40	18	21	-	34	13	20	-	6	5	1	-
Intellectual Disability	36	19	16	-	31	16	14	-	5	3	2	-
Autism/Attention Deficit Hyperactivity Disorder	143	98	46	-	123	86	37	-	20	11	9	-
None	11,897	5,740	6,155	2	8,271	3,859	4,411	2	3,626	1,881	1,744	-
DK/NS	134	64	70	-	87	42	46	-	47	22	24	-





Cayman Islands' 2021 Census Report



Table 5.2D: North Side: Incidence of Medically Diagnosed Illnesses by Type of Illness, Sex and Status, 2021

Medically Diagnosed Illness	Total				Caymanian				Non-Caymanian			
	Total	Male	Female	DK/NS	Total	Male	Female	DK/NS	Total	Male	Female	DK/NS
North Side												
Population Aged 5+	1,767	882	884	1	1,210	585	624	1	556	297	259	-
Cataract	52	27	24	-	47	24	22	-	5	3	2	-
Glaucoma	14	8	6	-	11	8	3	-	3	-	3	-
Diabetes	132	61	70	1	109	53	55	1	23	8	15	-
Meningitis	3	1	2	-	2	1	1	-	1	-	1	-
Congenital Brain Injury	-	-	-	-	-	-	-	-	-	-	-	-
Stroke	21	9	12	-	19	7	12	-	2	2	-	-
Dementia	3	2	1	-	3	2	1	-	-	-	-	-
Arthritis	66	23	43	-	56	18	38	-	10	5	5	-
Neonatal Brain Injury	1	1	-	-	1	1	-	-	-	-	-	-
Head Injury	2	1	1	-	1	1	-	-	1	-	1	-
Spinal Cord Injury	13	4	9	-	11	3	8	-	2	1	1	-
Muscular Dystrophy	5	4	1	-	5	4	1	-	-	-	-	-
Alzheimer's Disease	4	3	1	-	4	3	1	-	-	-	-	-
Intellectual Disability	8	4	4	-	8	4	4	-	-	-	-	-
Autism/Attention Deficit Hyperactivity Disorder	24	13	11	-	24	13	11	-	-	-	-	-
None	1,480	744	735	-	969	468	501	-	511	277	234	-
DK/NS	7	5	2	-	5	4	1	-	2	1	1	-





Cayman Islands' 2021 Census Report



Table 5.2E: East End: Incidence of Medically Diagnosed Illnesses by Type of Illness, Sex and Status,

Medically Diagnosed Illness	Total				Caymanian				Non-Caymanian			
	Total	Male	Female	DK/NS	Total	Male	Female	DK/NS	Total	Male	Female	DK/NS
East End												
Population Aged 5+	1,634	816	819	-	989	473	516	-	646	343	303	-
Cataract	43	21	21	-	40	19	20	-	3	2	1	-
Glaucoma	8	4	4	-	8	4	4	-	-	-	-	-
Diabetes	117	51	66	-	92	42	50	-	25	9	16	-
Meningitis	-	-	-	-	-	-	-	-	-	-	-	-
Congenital Brain Injury	1	-	1	-	1	-	1	-	-	-	-	-
Stroke	27	14	13	-	23	13	10	-	4	1	3	-
Dementia	6	1	5	-	6	1	5	-	-	-	-	-
Arthritis	57	18	39	-	52	18	34	-	5	-	5	-
Neonatal Brain Injury	-	-	-	-	-	-	-	-	-	-	-	-
Head Injury	8	8	-	-	8	8	-	-	-	-	-	-
Spinal Cord Injury	11	5	6	-	10	5	5	-	1	-	1	-
Muscular Dystrophy	1	-	1	-	-	-	-	-	1	-	1	-
Alzheimer's Disease	8	3	5	-	5	2	3	-	3	1	2	-
Intellectual Disability	11	6	5	-	11	6	5	-	-	-	-	-
Autism/Attention Deficit Hyperactivity Disorder	8	8	-	-	8	8	-	-	-	-	-	-
None	1,383	702	681	-	783	375	408	-	600	326	274	-
DK/NS	15	7	8	-	7	4	3	-	8	3	5	-





Table 5.2F: Sister Islands: Incidence of Medically Diagnosed Illnesses by Type of Illness, Sex and Status, 2021

Medically Diagnosed Illness	Total				Caymanian				Non-Caymanian		
	Total	Male	Female	DK/NS	Total	Male	Female	DK/NS	Total	Male	Female
Sister Islands											
Population Aged 5+	2,011	977	1,032	2	1,286	631	653	2	725	346	380
Cataract	100	32	68	-	97	32	65	-	3	-	3
Glaucoma	22	9	13	-	19	7	12	-	3	2	1
Diabetes	190	62	128	-	157	52	105	-	34	10	23
Meningitis	-	-	-	-	-	-	-	-	-	-	-
Congenital Brain Injury	1	-	1	-	1	-	1	-	-	-	-
Stroke	12	4	8	-	12	4	8	-	-	-	-
Dementia	7	1	6	-	7	1	6	-	-	-	-
Arthritis	131	41	90	-	123	39	84	-	8	2	6
Neonatal Brain Injury	-	-	-	-	-	-	-	-	-	-	-
Head Injury	6	3	3	-	4	1	3	-	2	2	-
Spinal Cord Injury	21	11	10	-	18	10	8	-	3	1	2
Muscular Dystrophy	5	2	3	-	5	2	3	-	-	-	-
Alzheimer's Disease	12	4	8	-	12	4	8	-	-	-	-
Intellectual Disability	7	3	4	-	5	2	3	-	2	1	1
Autism/Attention Deficit Hyperactivity Disorder	22	16	6	-	21	15	6	-	1	1	-
None	1,599	817	781	2	933	492	438	2	667	324	343
DK/NS	4	2	2	-	3	1	2	-	1	1	-



Table 5.3A: George Town: Incidence of Medically Diagnosed Illnesses by Type of Illness per 1000 Population, Sex and Status, 2021

Medically Diagnosed	Total				Caymanian				Non-Caymanian			
	Total	Male	Female	DK/NS	Total	Male	Female	DK/NS	Total	Male	Female	DK/NS
George Town												
Population Aged 5+	31,786	16,467	15,304	15	13,439	6,589	6,839	10	18,348	9,878	8,465	5
Cataract	18.7	18.2	19.3	-	26.9	25.0	28.9	-	12.7	13.7	11.5	-
Glaucoma	4.9	4.4	5.3	66.7	9.1	8.6	9.4	100.0	1.8	1.6	1.9	-
Diabetes	38.3	36.2	40.5	-	63.1	59.9	66.3	-	20.1	20.4	19.7	-
Meningitis	0.6	0.6	0.7	-	0.8	0.6	0.9	-	0.6	0.5	0.6	-
Congenital Brain Injury	0.3	0.2	0.3	-	0.5	0.5	0.6	-	0.1	0.1	-	-
Stroke	4.8	5.1	4.5	-	10.0	11.1	8.9	-	0.9	1.0	0.8	-
Dementia	2.5	1.5	3.5	-	4.6	3.1	6.1	-	0.9	0.5	1.3	-
Arthritis	17.2	9.9	25.0	-	32.8	19.6	45.7	-	5.7	3.4	8.3	-
Neonatal Brain Injury	0.3	0.2	0.3	-	0.5	0.6	0.4	-	0.1	-	0.2	-
Head Injury	1.9	2.2	1.7	-	3.6	4.0	3.3	-	0.7	0.9	0.4	-
Spinal Cord Injury	2.4	1.9	2.9	-	4.8	4.0	5.7	-	0.6	0.5	0.7	-
Muscular Dystrophy	0.3	0.2	0.4	-	0.6	0.5	0.7	-	0.1	0.1	0.1	-
Alzheimer's Disease	2.4	1.9	2.9	-	3.8	3.1	4.5	-	1.3	1.1	1.6	-
Intellectual Disability	2.6	2.9	2.3	-	4.5	5.1	4.0	-	1.2	1.4	0.8	-
Autism/Attention Deficit Hyperactivity Disorder	6.7	8.7	4.5	-	12.0	16.7	7.6	-	2.8	3.4	2.0	-
None	902.5	908.0	896.8	733.3	846.0	856.1	836.4	700.0	944.0	942.6	945.6	800.0
DK/NS	10.6	10.7	10.3	200.0	12.6	11.6	13.4	200.0	9.1	10.1	7.8	200.0



Table 5.3B: West Bay: Incidence of Medically Diagnosed Illnesses by Type of Illness per 1000 Population, Sex and Status, 2021

Medically Diagnosed Illness	Total				Caymanian				Non-Caymanian			
	Total	Male	Female	DK/NS	Total	Male	Female	DK/NS	Total	Male	Female	DK/NS
West Bay												
Population Aged 5+	14,001	7,097	6,903	1	7,935	3,867	4,067	1	6,066	3,230	2,836	-
Cataract	18.4	16.6	20.2	-	26.3	23.9	28.5	-	8.0	7.9	8.2	-
Glaucoma	6.1	5.3	6.9	-	9.1	8.2	10.0	-	2.2	1.9	2.5	-
Diabetes	43.1	34.8	51.6	-	60.4	48.4	71.8	-	20.5	18.6	22.6	-
Meningitis	1.3	1.4	1.2	-	1.7	1.8	1.5	-	0.8	0.9	0.7	-
Congenital Brain Injury	1.7	1.6	1.9	-	2.7	2.4	3.0	-	0.5	0.6	0.4	-
Stroke	6.1	6.5	5.7	-	9.7	10.8	8.8	-	1.3	1.3	1.4	-
Dementia	3.9	3.0	4.9	-	6.3	5.5	7.0	-	0.8	-	1.8	-
Arthritis	25.0	12.9	37.4	-	39.1	20.5	56.8	-	6.5	3.8	9.7	-
Neonatal Brain Injury	0.4	0.3	0.4	-	0.6	0.5	0.8	-	-	-	-	-
Head Injury	2.1	2.4	1.8	-	2.8	3.2	2.5	-	1.2	1.6	0.7	-
Spinal Cord Injury	5.1	4.2	6.0	-	7.6	5.8	9.3	-	1.8	2.2	1.4	-
Muscular Dystrophy	0.6	0.9	0.3	-	0.8	1.3	0.3	-	0.3	0.3	0.4	-
Alzheimer's Disease	3.9	3.2	4.6	-	5.3	4.7	5.8	-	2.0	1.3	2.9	-
Intellectual Disability	4.1	5.4	2.8	-	6.7	9.2	4.3	-	0.8	0.9	0.7	-
Autism/Attention Deficit Hyperactivity Disorder	11.3	15.2	7.4	-	16.5	23.9	9.5	-	4.5	4.7	4.3	-
None	881.3	893.8	868.6	1,000.0	833.6	846.6	821.2	1,000.0	943.8	950.2	936.5	-
DK/NS	9.2	8.6	9.7	-	10.0	10.8	9.3	-	8.0	6.0	10.4	-



Table 5.3C: Bodden Town: Incidence of Medically Diagnosed Illnesses by Type of Illness per 1000 Population, Sex and Status, 2021

Medically Diagnosed Illness	Total				Caymanian				Non-Caymanian			
	Total	Male	Female	DK/NS	Total	Male	Female	DK/NS	Total	Male	Female	DK/NS
Bodden Town												
Population Aged 5+	13,548	6,508	7,038	2	9,643	4,485	5,156	2	3,904	2,023	1,881	-
Cataract	19.1	17.2	20.8	-	22.9	20.2	25.2	-	9.6	10.6	8.6	-
Glaucoma	7.1	7.5	6.8	-	9.0	10.2	7.9	-	2.6	1.5	3.8	-
Diabetes	54.4	53.0	55.6	-	63.9	62.8	64.9	-	30.7	31.2	30.3	-
Meningitis	0.5	0.6	0.4	-	0.7	0.9	0.6	-	-	-	-	-
Congenital Brain Injury	0.8	0.8	0.7	-	0.9	1.1	0.8	-	0.3	-	0.5	-
Stroke	6.4	7.2	5.6	-	8.3	9.3	7.5	-	1.6	2.5	0.5	-
Dementia	2.4	2.2	2.6	-	3.2	2.9	3.4	-	0.5	0.5	0.5	-
Arthritis	21.4	10.9	31.1	-	27.1	15.2	37.5	-	7.3	1.5	13.5	-
Neonatal Brain Injury	0.6	0.6	0.6	-	0.5	0.5	0.6	-	0.8	1.0	0.5	-
Head Injury	1.2	1.4	1.0	-	1.3	1.1	1.4	-	1.0	2.0	-	-
Spinal Cord Injury	4.0	3.3	4.6	-	4.6	3.4	5.7	-	2.3	3.0	1.6	-
Muscular Dystrophy	1.0	0.8	1.2	-	1.3	0.9	1.6	-	0.3	0.5	-	-
Alzheimer's Disease	2.9	2.8	3.0	-	3.5	2.9	3.9	-	1.6	2.5	0.5	-
Intellectual Disability	2.6	3.0	2.3	-	3.2	3.6	2.8	-	1.3	1.5	1.1	-
Autism/Attention Deficit Hyperactivity Disorder	10.6	15.0	6.5	-	12.8	19.3	7.1	-	5.2	5.5	4.9	-
None	878.2	882.0	874.6	1,000.0	857.7	860.3	855.4	1,000.0	928.6	930.1	927.0	-
DK/NS	9.9	9.8	10.0	-	9.1	9.3	8.9	-	12.0	11.1	13.0	-



Table 5.3D: North Side: Incidence of Medically Diagnosed Illnesses by Type of Illness per 1000 Population, Sex and Status, 2021

Medically Diagnosed Illness	Total				Caymanian				Non-Caymanian			
	Total	Male	Female	DK/NS	Total	Male	Female	DK/NS	Total	Male	Female	DK/NS
North Side												
Population Aged 5+	1,767	882	884	1	1,210	585	624	1	556	297	259	-
Cataract	29.4	31.1	27.6	-	38.7	41.7	35.8	-	9.1	10.3	7.8	-
Glaucoma	8.1	9.2	6.9	-	9.2	13.9	4.9	-	5.5	-	11.8	-
Diabetes	74.8	69.2	79.4	1,000.0	89.9	90.4	87.9	1,000.0	42.0	27.4	58.8	-
Meningitis	1.7	1.2	2.3	-	1.7	1.7	1.6	-	1.8	-	3.9	-
Congenital Brain Injury	-	-	-	-	-	-	-	-	-	-	-	-
Stroke	12.1	10.4	13.8	-	16.0	12.2	19.5	-	3.7	6.8	-	-
Dementia	1.7	2.3	1.2	-	2.5	3.5	1.6	-	-	-	-	-
Arthritis	37.4	26.5	48.3	-	46.2	31.3	60.3	-	18.3	17.1	19.6	-
Neonatal Brain Injury	0.6	1.2	-	-	0.8	1.7	-	-	-	-	-	-
Head Injury	1.2	1.2	1.2	-	0.8	1.7	-	-	1.8	-	3.9	-
Spinal Cord Injury	7.5	4.6	10.4	-	9.2	5.2	13.0	-	3.7	3.4	3.9	-
Muscular Dystrophy	2.9	4.6	1.2	-	4.2	7.0	1.6	-	-	-	-	-
Alzheimer's Disease	2.3	3.5	1.2	-	3.4	5.2	1.6	-	-	-	-	-
Intellectual Disability	4.6	4.6	4.6	-	6.7	7.0	6.5	-	-	-	-	-
Autism/Attention Deficit Hyperactivity Disorder	13.8	15.0	12.7	-	20.2	22.6	17.9	-	-	-	-	-
None	837.7	844.3	832.0	-	800.8	800.0	802.9	-	917.7	931.5	902.0	-
DK/NS	4.0	5.8	2.3	-	4.2	7.0	1.6	-	3.7	3.4	3.9	-



Table 5.3E: East End: Incidence of Medically Diagnosed Illnesses by Type of Illness per 1000 Population, Sex and Status, 2021

Medically Diagnosed Illness	Total				Caymanian				Non-Caymanian			
	Total	Male	Female	DK/NS	Total	Male	Female	DK/NS	Total	Male	Female	DK/NS
East End												
Population Aged 5+	1,634	816	819	-	989	473	516	-	646	343	303	-
Cataract	26.1	26.2	26.1	-	40.1	40.9	39.4	-	4.7	5.9	3.4	-
Glaucoma	5.0	5.0	5.0	-	8.2	8.6	7.9	-	-	-	-	-
Diabetes	71.6	62.3	80.7	-	92.6	88.2	96.6	-	39.4	26.7	53.7	-
Meningitis	-	-	-	-	-	-	-	-	-	-	-	-
Congenital Brain Injury	0.6	-	1.2	-	1.0	-	2.0	-	-	-	-	-
Stroke	16.8	17.5	16.1	-	23.7	28.0	19.7	-	6.3	3.0	10.1	-
Dementia	3.7	1.2	6.2	-	6.2	2.2	9.9	-	-	-	-	-
Arthritis	34.8	22.4	47.2	-	52.5	38.7	65.1	-	7.9	-	16.8	-
Neonatal Brain Injury	-	-	-	-	-	-	-	-	-	-	-	-
Head Injury	5.0	10.0	-	-	8.2	17.2	-	-	-	-	-	-
Spinal Cord Injury	6.8	6.2	7.5	-	10.3	10.8	9.9	-	1.6	-	3.4	-
Muscular Dystrophy	0.6	-	1.2	-	-	-	-	-	1.6	-	3.4	-
Alzheimer's Disease	5.0	3.7	6.2	-	5.1	4.3	5.9	-	4.7	3.0	6.7	-
Intellectual Disability	6.8	7.5	6.2	-	11.3	12.9	9.9	-	-	-	-	-
Autism/Attention Deficit Hyperactivity Disorder	5.0	10.0	-	-	8.2	17.2	-	-	-	-	-	-
None	846.3	860.3	832.3	-	792.2	793.5	790.9	-	929.1	952.5	902.7	-
DK/NS	9.3	8.7	9.9	-	7.2	8.6	5.9	-	12.6	8.9	16.8	-



Table 5.3F: Sister Islands: Incidence of Medically Diagnosed Illnesses by Type of Illness per 1000 Population, Sex and Status, 2021

Medically Diagnosed Illness	Total				Caymanian				Non-Caymanian		
	Total	Male	Female	DK/NS	Total	Male	Female	DK/NS	Total	Male	Female
Sister Islands											
Population Aged 5+	2,011	977	1,032	2	1,286	631	653	2	725	346	380
Cataract	5.0	3.3	6.6	-	7.5	5.1	10.0	-	0.4	-	0.8
Glaucoma	1.1	0.9	1.3	-	1.5	1.1	1.8	-	0.4	0.6	0.3
Diabetes	9.4	6.3	12.4	-	12.2	8.2	16.1	-	4.7	2.9	6.1
Meningitis	-	-	-	-	-	-	-	-	-	-	-
Congenital Brain Injury	0.0	-	0.1	-	0.1	-	0.2	-	-	-	-
Stroke	0.6	0.4	0.8	-	0.9	0.6	1.2	-	-	-	-
Dementia	0.3	0.1	0.6	-	0.5	0.2	0.9	-	-	-	-
Arthritis	6.5	4.2	8.7	-	9.6	6.2	12.9	-	1.1	0.6	1.6
Neonatal Brain Injury	-	-	-	-	-	-	-	-	-	-	-
Head Injury	0.3	0.3	0.3	-	0.3	0.2	0.5	-	0.3	0.6	-
Spinal Cord Injury	1.0	1.1	1.0	-	1.4	1.6	1.2	-	0.4	0.3	0.5
Muscular Dystrophy	0.2	0.2	0.3	-	0.4	0.3	0.5	-	-	-	-
Alzheimer's Disease	0.6	0.4	0.8	-	0.9	0.6	1.2	-	-	-	-
Intellectual Disability	0.3	0.3	0.4	-	0.4	0.3	0.5	-	0.3	0.3	0.3
Autism/Attention Deficit Hyperactivity Disorder	1.1	1.6	0.6	-	1.6	2.4	0.9	-	0.1	0.3	-
None	79.5	83.6	75.7	-	72.6	78.0	67.1	-	92.0	93.6	90.3
DK/NS	0.2	0.2	0.2	-	0.2	0.2	0.3	-	0.1	0.3	-



Table 5.4: Incidence of Medically Diagnosed Illnesses by Type of Disability, 2021

	Difficulty						
	Seeing	Hearing	Remember/ Concentrating	Communicating / Speaking	Upper Body Function	Walking/ Climbing Stairs	Washing All Over
Cataract	250	126	149	34	91	261	106
Glaucoma	109	44	60	13	33	98	46
Diabetes	353	186	286	78	173	530	206
Meningitis	6	5	4	3	4	7	3
Congenital Brain Injury	9	6	20	11	16	26	16
Stroke	90	56	114	59	110	183	124
Dementia	35	39	131	60	48	100	92
Arthritis	235	143	258	38	176	554	167
Neonatal Brain Injury	3	2	9	10	9	16	8
Head Injury	22	16	41	14	18	38	20
Spinal Cord Injury	35	19	34	11	63	121	42
Muscular Dystrophy	7	6	7	6	11	22	15
Alzheimer's Disease	34	28	91	41	44	68	66
Intellectual Disability	15	11	52	54	19	37	34
Autism/ADHD	43	11	131	67	16	27	29
None	1,555	525	664	275	368	755	314
DK/NS	17	4	13	3	8	13	4



Table 5.5: Incidence of Medically Diagnosed Illnesses by Type of Disability and Duration 2021

	Seeing		Hearing		Remember / Concentrating		Communicating / Speaking		Upper Body Function		Walking / Climbing Stairs		Washing All Over	
	Short-term	Long-term	Short-term	Long-term	Short-term	Long-term	Short-term	Long-term	Short-term	Long-term	Short-term	Long-term	Short-term	Long-term
Cataract	63	187	37	90	57	92	11	22	24	66	48	214	29	76
Glaucoma	29	79	8	36	17	43	3	10	11	21	21	76	9	37
Diabetes	98	255	40	146	91	195	29	49	41	132	120	410	56	151
Meningitis	1	5	-	5	1	3	-	3	-	4	1	6	-	3
Congenital Brain Injury	1	8	-	6	3	17	-	11	3	13	4	22	-	16
Stroke	24	65	7	49	21	93	12	47	15	95	35	149	24	100
Dementia	8	26	5	34	19	112	11	49	2	46	14	85	18	73
Arthritis	58	177	28	115	82	176	8	29	41	135	111	443	38	129
Neonatal Brain Injury	1	2	-	2	2	7	1	9	-	9	2	14	1	7
Head Injury	5	17	-	16	7	34	2	12	5	13	7	31	4	16
Spinal Cord Injury	9	25	4	15	6	27	2	9	17	46	22	99	9	33
Muscular Dystrophy	2	5	1	5	-	7	2	4	1	10	4	18	4	11
Alzheimer's Disease	5	28	4	24	12	78	12	28	6	38	10	58	12	54
Intellectual Disability	1	14	3	8	8	44	10	44	3	16	5	32	2	32
Autism/Attention Deficit Hyperactivity Disorder	9	34	3	8	22	109	11	56	5	11	4	23	3	26
None	545	1,010	231	294	303	361	182	93	237	131	340	415	203	111
DK/NS	7	10	2	2	9	4	2	1	6	2	6	7	1	3

Long-term: Greater than 6 months prior to October 10, 2021

Short-term: Less than 6 months prior to October 10, 2021



Cayman Islands' 2021 Census Report



Table 5.6: Incidence of Medically Diagnosed Illnesses, 2021

	Cataract	Glaucoma	Diabetes	Meningitis	Congenital Brain Injury	Stroke	Dementia	Arthritis	Neonatal Brain Injury	Head Injury	Spinal Cord Injury	Muscular Dystrophy	Alzheimer's Disease	Intellectual Disability	Autism / ADHD	None	DK/NS
Cataract	1,305	94	224	4	1	48	16	198	1	10	13	4	15	4	3	-	-
Glaucoma	94	381	109	-	3	18	8	73	1	2	13	1	4	4	6	-	-
Diabetes	224	109	2,995	5	9	118	48	329	-	12	34	8	26	8	20	-	-
Meningitis	4	-	5	49	-	1	-	4	-	1	-	-	-	-	1	-	-
Congenital Brain Injury	1	3	9	-	45	7	3	7	2	4	1	1	1	6	2	-	-
Stroke	48	18	118	1	7	384	21	52	4	15	7	5	8	3	1	-	-
Dementia	16	8	48	-	3	21	182	26	1	2	2	1	25	5	-	-	-
Arthritis	198	73	329	4	7	52	26	1,439	5	13	38	8	23	6	7	-	-
Neonatal Brain Injury	1	1	-	-	2	4	1	5	23	2	2	-	-	2	2	-	-
Head Injury	10	2	12	1	4	15	2	13	2	123	10	-	1	7	7	-	-
Spinal Cord Injury	13	13	34	-	1	7	2	38	2	10	247	3	2	4	4	-	-
Muscular Dystrophy	4	1	8	-	1	5	1	8	-	-	3	43	3	3	-	-	-
Alzheimer's Disease	15	4	26	-	1	8	25	23	-	1	2	3	193	3	2	-	-
Intellectual Disability	4	4	8	-	6	3	5	6	2	7	4	3	3	202	15	-	-
Autism/ADHD	3	6	20	1	2	1	-	7	2	7	4	-	2	15	570	-	-
None	-	-	-	-	-	-	-	-	-	-	-	-	-	-	-	57,387	-
DK/NS	-	-	-	-	-	-	-	-	-	-	-	-	-	-	-	-	189
		Number of persons with the respective illness only. The other numbers are persons with other illness in addition to the one coloured purple															





Cayman Islands' 2021 Census Report



Table 5.7A: Incidence of Disability by Type of Disability, Sex and Status, 2021

Disability	Total				Caymanian				Non-Caymanian			
	Total	Male	Female	DK/NS	Total	Male	Female	DK/NS	Total	Male	Female	DK/NS
Total Responses	9,529	4,166	5,360	2	7,582	3,235	4,345	2	1,947	932	1,015	-
Difficulty Seeing	2,406	1,050	1,355	1	1,687	711	975	1	718	339	379	-
Difficulty Hearing	978	513	465	1	756	393	362	1	223	120	103	-
Difficulty Remember/Concentrating	1,605	708	897	-	1,336	595	740	-	270	113	157	-
Difficulty Communicating/Speaking	614	344	271	-	474	256	218	-	140	87	53	-
Difficulty with Upper Body Function	885	379	506	-	718	293	425	-	167	86	80	-
Difficulty Walking/Climbing Stairs	2,139	778	1,361	-	1,858	667	1,191	-	281	111	170	-
Difficulty Washing All Over	901	395	507	-	753	319	433	-	149	75	73	-

Table 5.7B: Incidence of Disability by Type of Disability per 1000 Population, Sex and Status, 2021

Disability	Total				Caymanian				Non-Caymanian			
	Total	Male	Female	DK/NS	Total	Male	Female	DK/NS	Total	Male	Female	DK/NS
Population Aged 5+	64,746	32,745	31,980	21	34,501	16,629	17,856	16	30,245	16,116	14,124	5
Difficulty Seeing	37.2	32.1	42.4	47.6	48.9	42.8	54.6	62.5	23.7	21.0	26.9	-
Difficulty Hearing	15.1	15.7	14.5	47.6	21.9	23.6	20.3	62.5	7.4	7.4	7.3	-
Difficulty Remember/Concentrating	24.8	21.6	28.1	-	38.7	35.8	41.5	-	8.9	7.0	11.1	-
Difficulty Communicating/Speaking	9.5	10.5	8.5	-	13.7	15.4	12.2	-	4.6	5.4	3.7	-
Difficulty with Upper Body Function	13.7	11.6	15.8	-	20.8	17.6	23.8	-	5.5	5.4	5.7	-
Difficulty Walking/Climbing Stairs	33.0	23.8	42.6	-	53.9	40.1	66.7	-	9.3	6.9	12.0	-
Difficulty Washing All Over	13.9	12.1	15.8	-	21.8	19.2	24.3	-	4.9	4.7	5.2	-





Table 5.8A: George Town/West Bay Incidence of Disability by Type of Disability, Sex and Status, 2021

	Total				Caymanian				Non-Caymanian			
	Total	Male	Female	DK/NS	Total	Male	Female	DK/NS	Total	Male	Female	DK/NS
George Town												
Population Aged 5+	31,786	16,467	15,304	15	13,439	6,589	6,839	10	18,348	9,878	8,465	5
Difficulty Seeing	1,076	496	579	1	633	268	364	1	443	229	215	-
Difficulty Hearing	419	219	199	1	279	144	133	1	140	74	66	-
Difficulty Remember/Concentrating	610	276	335	-	461	210	251	-	150	66	83	-
Difficulty Communicating/Speaking	245	143	102	-	153	83	69	-	93	60	33	-
Difficulty with Upper Body Function	337	151	186	-	231	99	132	-	106	52	54	-
Difficulty Walking/Climbing Stairs	801	308	492	-	637	243	394	-	164	65	99	-
Difficulty Washing All Over	353	157	196	-	249	107	142	-	104	50	54	-
West Bay												
Population Aged 5+	14,001	7,097	6,903	1	7,935	3,867	4,067	1	6,066	3,230	2,836	-
Difficulty Seeing	445	194	250	-	341	149	192	-	104	46	58	-
Difficulty Hearing	239	129	110	-	199	107	93	-	40	22	17	-
Difficulty Remember/Concentrating	422	201	221	-	374	183	191	-	48	18	30	-
Difficulty Communicating/Speaking	163	92	71	-	144	81	63	-	18	10	8	-
Difficulty with Upper Body Function	258	113	145	-	227	98	129	-	32	15	16	-
Difficulty Walking/Climbing Stairs	544	194	350	-	497	172	326	-	47	22	24	-
Difficulty Washing All Over	230	104	126	-	215	95	120	-	15	9	6	-



Cayman Islands' 2021 Census Report



Table 5.8B: Bodden Town/North Side Incidence of Disability by Type of Disability, Sex and Status, 2021

	Total				Caymanian				Non-Caymanian			
	Total	Male	Female	DK/NS	Total	Male	Female	DK/NS	Total	Male	Female	DK/NS
Bodden Town												
Population Aged 5+	13,548	6,508	7,038	2	9,643	4,485	5,156	2	3,904	2,023	1,881	-
Difficulty Seeing	519	216	303	-	415	179	236	-	104	37	67	-
Difficulty Hearing	167	81	85	-	144	67	77	-	22	14	8	-
Difficulty Remember/Concentrating	304	125	179	-	261	110	152	-	43	15	27	-
Difficulty Communicating/Speaking	135	79	56	-	113	65	48	-	22	14	8	-
Difficulty with Upper Body Function	188	78	110	-	169	65	104	-	19	13	6	-
Difficulty Walking/Climbing Stairs	443	164	280	-	397	148	248	-	47	15	32	-
Difficulty Washing All Over	195	91	105	-	175	79	96	-	20	11	9	-
North Side												
Population Aged 5+	1,767	882	884	1	1,210	585	624	1	556	297	259	-
Difficulty Seeing	106	43	63	-	85	33	53	-	20	10	10	-
Difficulty Hearing	36	25	10	-	31	21	9	-	5	4	1	-
Difficulty Remember/Concentrating	56	27	28	-	47	22	24	-	9	5	4	-
Difficulty Communicating/Speaking	20	9	11	-	16	6	10	-	4	3	1	-
Difficulty with Upper Body Function	31	14	16	-	27	12	15	-	3	2	1	-
Difficulty Walking/Climbing Stairs	86	31	56	-	78	25	53	-	8	5	3	-
Difficulty Washing All Over	36	14	21	-	34	12	21	-	2	2	-	-





Cayman Islands' 2021 Census Report



Table 5.8C: East End/Sister Islands Incidence of Disability by Type of Disability, Sex and Status, 2021

	Total				Caymanian				Non-Caymanian			
	Total	Male	Female	DK/NS	Total	Male	Female	DK/NS	Total	Male	Female	DK/NS
East End												
Population Aged 5+	1,634	816	819	-	989	473	516	-	646	343	303	-
Difficulty Seeing	130	52	78	-	104	41	63	-	26	11	15	-
Difficulty Hearing	47	21	25	-	41	20	20	-	6	1	5	-
Difficulty Remember/Concentrating	84	32	53	-	74	27	47	-	10	4	6	-
Difficulty Communicating/Speaking	22	11	11	-	21	11	10	-	1	-	1	-
Difficulty with Upper Body Function	26	12	14	-	22	10	12	-	4	2	2	-
Difficulty Walking/Climbing Stairs	94	31	63	-	86	31	56	-	7	-	7	-
Difficulty Washing All Over	35	16	18	-	31	14	16	-	4	2	2	-
Sister Islands												
Population Aged 5+	2,011	976	1,032	2	1,286	631	653	2	725	346	379	-
Difficulty Seeing	130	49	81	-	110	43	67	-	20	6	14	-
Difficulty Hearing	71	37	35	-	62	33	29	-	9	4	5	-
Difficulty Remember/Concentrating	128	47	81	-	118	43	75	-	10	4	6	-
Difficulty Communicating/Speaking	28	9	19	-	26	9	17	-	2	-	2	-
Difficulty with Upper Body Function	45	11	34	-	42	9	33	-	3	2	1	-
Difficulty Walking/Climbing Stairs	171	51	120	-	163	48	115	-	8	3	5	-
Difficulty Washing All Over	53	13	40	-	50	12	38	-	3	1	2	-





Cayman Islands' 2021 Census Report



Table 5.9A: George Town/West Bay Incidence of Disability by Type of Disability per 1000 Population by Sex and Status, 2021

	Total				Caymanian				Non-Caymanian			
	Total	Male	Female	DK/NS	Total	Male	Female	DK/NS	Total	Male	Female	DK/NS
George Town												
Population Aged 5+	31,786	16,467	15,304	15	13,439	6,589	6,839	10	18,348	9,878	8,465	5
Difficulty Seeing	33.9	30.1	37.8	66.7	47.1	40.6	53.2	100.0	24.2	23.2	25.4	-
Difficulty Hearing	13.2	13.3	13.0	66.7	20.7	21.9	19.5	100.0	7.7	7.5	7.8	-
Difficulty Remember/Concentrating	19.2	16.7	21.9	-	34.3	31.8	36.7	-	8.1	6.7	9.9	-
Difficulty Communicating/Speaking	7.7	8.7	6.6	-	11.4	12.7	10.1	-	5.0	6.1	3.8	-
Difficulty with Upper Body Function	10.6	9.1	12.2	-	17.2	15.0	19.3	-	5.8	5.3	6.4	-
Difficulty Walking/Climbing Stairs	25.2	18.7	32.2	-	47.4	36.9	57.6	-	8.9	6.6	11.7	-
Difficulty Washing All Over	11.1	9.5	12.8	-	18.5	16.2	20.8	-	5.7	5.0	6.4	-
West Bay												
Population Aged 5+	14,001	7,097	6,903	1	7,935	3,867	4,067	1	6,066	3,230	2,836	-
Difficulty Seeing	31.8	27.4	36.3	-	42.9	38.4	47.3	-	17.1	14.2	20.4	-
Difficulty Hearing	17.1	18.2	15.9	-	25.1	27.6	22.8	-	6.5	6.9	6.1	-
Difficulty Remember/Concentrating	30.2	28.4	32.0	-	47.2	47.4	47.0	-	7.9	5.7	10.4	-
Difficulty Communicating/Speaking	11.6	12.9	10.3	-	18.2	21.0	15.5	-	3.0	3.1	2.9	-
Difficulty with Upper Body Function	18.5	15.9	21.1	-	28.6	25.3	31.8	-	5.2	4.7	5.7	-
Difficulty Walking/Climbing Stairs	38.9	27.4	50.7	-	62.7	44.5	80.0	-	7.7	6.9	8.6	-
Difficulty Washing All Over	16.4	14.6	18.3	-	27.1	24.5	29.5	-	2.5	2.8	2.2	-





Cayman Islands' 2021 Census Report



Table 5.9B: Bodden Town/North Side Incidence of Disability by Type of Disability per 1000 Population by Sex and Status, 2021

	Total				Caymanian				Non-Caymanian			
	Total	Male	Female	DK/NS	Total	Male	Female	DK/NS	Total	Male	Female	DK/NS
Bodden Town												
Population Aged 5+	13,548	6,508	7,038	2	9,643	4,485	5,156	2	3,904	2,023	1,881	-
Difficulty Seeing	38.3	33.1	43.1	-	43.0	39.9	45.8	-	26.6	18.1	35.7	-
Difficulty Hearing	12.3	12.5	12.1	-	15.0	15.0	15.0	-	5.7	7.0	4.3	-
Difficulty Remember/Concentrating	22.4	19.2	25.4	-	27.1	24.5	29.4	-	10.9	7.5	14.6	-
Difficulty Communicating/speaking	10.0	12.2	7.9	-	11.7	14.5	9.3	-	5.7	7.0	4.3	-
Difficulty w/Upper Body	13.9	12.0	15.6	-	17.5	14.5	20.1	-	4.9	6.5	3.2	-
Difficulty Walking/Climbing Stairs	32.7	25.2	39.7	-	41.1	33.1	48.1	-	12.0	7.5	16.8	-
Difficulty Washing All Over	14.4	13.9	14.9	-	18.1	17.7	18.5	-	5.2	5.5	4.9	-
North Side												
Population Aged 5+	1,767	882	884	1	1,210	585	624	1	556	297	259	-
Difficulty Seeing	59.9	48.4	71.3	-	70.6	55.7	84.7	-	36.6	34.2	39.2	-
Difficulty Hearing	20.1	28.8	11.5	-	25.2	36.5	14.7	-	9.1	13.7	3.9	-
Difficulty Remember/Concentrating	31.7	31.1	32.2	-	38.7	38.3	39.1	-	16.5	17.1	15.7	-
Difficulty Communicating/speaking	11.5	10.4	12.7	-	13.4	10.4	16.3	-	7.3	10.3	3.9	-
Difficulty w/Upper Body	17.3	16.1	18.4	-	22.7	20.9	24.4	-	5.5	6.8	3.9	-
Difficulty Walking/Climbing Stairs	48.9	34.6	63.3	-	64.7	43.5	84.7	-	14.6	17.1	11.8	-
Difficulty Washing All Over	20.1	16.1	24.2	-	27.7	20.9	34.2	-	3.7	6.8	-	-





Cayman Islands' 2021 Census Report



Table 5.9C: East End/Sister Islands Incidence of Disability by Type of Disability per 1000 Population by Sex and Status, 2021

	Total				Caymanian				Non-Caymanian			
	Total	Male	Female	DK/NS	Total	Male	Female	DK/NS	Total	Male	Female	DK/NS
East End												
Population Aged 5+	1,634	816	819	-	989	473	516	-	646	343	303	-
Difficulty Seeing	79.7	63.6	95.7	-	104.9	86.0	122.3	-	40.9	32.6	50.3	-
Difficulty Hearing	28.6	26.2	31.1	-	41.2	43.0	39.4	-	9.4	3.0	16.8	-
Difficulty Remember/Concentrating	51.6	38.7	64.6	-	75.1	58.1	90.7	-	15.7	11.9	20.1	-
Difficulty Communicating/Speaking	13.7	13.7	13.7	-	21.6	23.7	19.7	-	1.6	-	3.4	-
Difficulty with Upper Body Function	16.2	15.0	17.4	-	22.6	21.5	23.7	-	6.3	5.9	6.7	-
Difficulty Walking/Climbing Stairs	57.2	37.4	77.0	-	87.4	64.5	108.5	-	11.0	-	23.5	-
Difficulty Washing All Over	21.2	20.0	22.4	-	30.9	30.1	31.6	-	6.3	5.9	6.7	-
Sister Islands												
Population Aged 5+	2,011	976	1,032	2	1,286	631	653	2	725	346	379	-
Difficulty Seeing	64.7	50.0	78.8	-	85.4	67.7	102.8	-	28.1	17.6	37.5	-
Difficulty Hearing	35.4	37.5	33.5	-	48.3	51.6	45.2	-	12.6	11.8	13.4	-
Difficulty Remember/Concentrating	63.7	47.9	78.8	-	91.8	67.7	115.3	-	14.0	11.8	16.1	-
Difficulty Communicating/Speaking	14.2	9.4	18.7	-	20.6	14.5	26.5	-	2.8	-	5.4	-
Difficulty with Upper Body Function	22.3	11.5	32.5	-	32.4	14.5	49.8	-	4.2	5.9	2.7	-
Difficulty Walking/Climbing Stairs	85.0	52.1	116.3	-	126.6	75.8	176.0	-	11.2	8.8	13.4	-
Difficulty Washing All Over	26.3	13.5	38.4	-	38.8	19.4	57.6	-	4.2	2.9	5.4	-





Cayman Islands' 2021 Census Report



Table 5.10A: Total Population by Type of Health Insurance, Sex and Status, 2021

Type of Health Insurance	Total				Caymanian				Non-Caymanian			
	Total	Male	Female	DK/NS	Total	Male	Female	DK/NS	Total	Male	Female	DK/NS
Total	68,811	34,823	33,927	61	36,808	17,797	18,987	24	32,003	17,026	14,940	37
Have Insurance	64,084	32,235	31,819	29	33,517	15,960	17,538	18	30,568	16,276	14,281	11
Covered by local provider	50,672	26,047	24,606	18	23,592	11,405	12,176	10	27,080	14,642	12,430	8
Covered by CI Government	12,433	5,693	6,730	10	9,492	4,341	5,143	8	2,942	1,352	1,588	2
Covered by overseas provider	980	495	483	1	433	214	220	-	546	282	263	1
Uninsurable	144	82	62	-	103	58	45	-	42	24	17	-
No Insurance	3,644	2,016	1,622	6	2,719	1,536	1,179	4	926	480	443	2
DK/NS	938	489	423	25	470	243	225	2	468	246	198	23

Table 5.10B: Total Population by Type of Health Insurance, Sex and Status, 2021, Percent

Type of Health Insurance	Total				Caymanian				Non-Caymanian			
	Total	Male	Female	DK/NS	Total	Male	Female	DK/NS	Total	Male	Female	DK/NS
Total	100.0	100.0	100.0	100.0	100.0	100.0	100.0	100.0	100.0	100.0	100.0	100.0
Have Insurance	93.1	92.6	93.8	48.3	91.1	89.7	92.4	75.0	95.5	95.6	95.6	30.6
Covered by local provider	73.6	74.8	72.5	30.0	64.1	64.1	64.1	41.7	84.6	86.0	83.2	22.2
Covered by CI Government	18.1	16.3	19.8	16.7	25.8	24.4	27.1	33.3	9.2	7.9	10.6	5.6
Covered by overseas provider	1.4	1.4	1.4	1.7	1.2	1.2	1.2	-	1.7	1.7	1.8	2.8
Uninsurable	0.2	0.2	0.2	-	0.3	0.3	0.2	-	0.1	0.1	0.1	-
No Insurance	5.3	5.8	4.8	10.0	7.4	8.6	6.2	16.7	2.9	2.8	3.0	5.6
DK/NS	1.4	1.4	1.2	41.7	1.3	1.4	1.2	8.3	1.5	1.4	1.3	63.9





Cayman Islands' 2021 Census Report



Table 5.11A: George Town/West Bay Population by Type of Health Insurance, Sex and Status, 2021

Type of Health Insurance	Total				Caymanian				Non-Caymanian			
	Total	Male	Female	DK/NS	Total	Male	Female	DK/NS	Total	Male	Female	DK/NS
George Town												
Total	33,898	17,535	16,322	41	14,344	7,040	7,292	12	19,554	10,495	9,030	28
Have Insurance	32,058	16,525	15,515	18	13,207	6,409	6,789	9	18,851	10,116	8,726	9
Covered by local provider	27,147	14,238	12,898	11	10,129	4,988	5,137	4	17,018	9,250	7,761	7
Covered by CI Government	4,408	2,032	2,370	6	2,906	1,338	1,563	5	1,502	695	807	1
Covered by overseas provider	502	254	247	1	172	83	88	-	331	171	159	1
Uninsurable	28	13	15	-	20	11	9	-	8	2	6	-
No Insurance	1,363	756	603	4	941	527	412	2	422	229	191	2
DK/NS	449	241	189	18	176	93	82	1	273	149	107	17
West Bay												
Total	14,784	7,498	7,278	8	8,430	4,118	4,309	3	6,354	3,380	2,968	5
Have Insurance	13,483	6,774	6,706	3	7,432	3,551	3,878	3	6,051	3,223	2,828	-
Covered by local provider	10,871	5,586	5,284	1	5,308	2,594	2,713	1	5,563	2,992	2,571	-
Covered by CI Government	2,435	1,096	1,338	2	2,074	935	1,137	2	361	161	200	-
Covered by overseas provider	177	93	84	-	50	22	27	-	127	70	57	-
Uninsurable	42	23	18	-	26	13	13	-	15	10	5	-
No Insurance	1,059	601	458	-	858	496	361	-	201	105	97	-
DK/NS	200	100	96	5	114	57	57	-	86	43	39	5





Table 5.11B: Bodden Town/North Side Population by Type of Health Insurance, Sex and Status, 2021

Type of Health Insurance	Total				Caymanian				Non-Caymanian		
	Total	Male	Female	DK/NS	Total	Male	Female	DK/NS	Total	Male	Female
Bodden Town											
Total	14,398	6,946	7,442	9	10,311	4,827	5,479	6	4,086	2,119	1,964
Have Insurance	13,395	6,412	6,978	5	9,602	4,434	5,164	3	3,793	1,978	1,813
Covered by local provider	9,645	4,692	4,949	4	6,579	3,068	3,508	3	3,066	1,624	1,441
Covered by CI Government	3,553	1,630	1,922	1	2,876	1,298	1,578	-	677	333	344
Covered by overseas provider	196	89	107	-	146	68	78	-	50	21	28
Uninsurable	65	42	23	-	49	31	18	-	16	11	5
No Insurance	751	397	352	2	559	310	247	2	191	86	105
DK/NS	187	96	89	2	102	52	49	1	85	44	41
North Side											
Total	1,857	934	922	1	1,277	620	656	1	580	313	266
Have Insurance	1,681	825	855	1	1,144	533	610	1	537	292	245
Covered by local provider	1,117	569	548	-	674	317	357	-	442	251	191
Covered by CI Government	546	246	299	1	461	211	249	1	85	36	50
Covered by overseas provider	18	10	8	-	9	5	4	-	9	5	4
Uninsurable	2	1	1	-	2	1	1	-	-	-	-
No Insurance	159	99	60	-	117	77	40	-	42	21	20
DK/NS	15	9	6	-	14	9	5	-	1	-	1



Cayman Islands' 2021 Census Report



Table 5.11C: East End/Sister Islands Population by Type of Health Insurance, Sex and Status, 2021

Type of Health Insurance	Total				Caymanian				Non-Caymanian		
	Total	Male	Female	DK/NS	Total	Male	Female	DK/NS	Total	Male	Female
East End											
Total	1,758	882	877	-	1,080	523	557	-	678	359	319
Have Insurance	1,457	724	733	-	842	404	438	-	615	320	295
Covered by local provider	993	515	478	-	451	225	226	-	542	290	252
Covered by CI Government	453	202	250	-	384	174	211	-	68	28	40
Covered by overseas provider	12	7	5	-	7	5	2	-	5	2	3
Uninsurable	7	3	4	-	5	2	3	-	2	1	1
No Insurance	238	128	110	-	187	96	92	-	51	33	18
DK/NS	56	26	29	-	46	21	24	-	10	5	5
Sister Islands											
Total	2,115	1,028	1,085	2	1,365	669	694	2	751	359	392
Have Insurance	2,010	975	1,032	2	1,290	629	659	2	720	347	373
Covered by local provider	899	447	450	2	451	213	236	2	449	235	214
Covered by CI Government	1,037	486	551	-	790	386	404	-	247	100	147
Covered by overseas provider	73	42	32	-	49	29	19	-	24	12	12
Uninsurable	-	-	-	-	-	-	-	-	-	-	-
No Insurance	75	36	40	-	57	29	27	-	18	6	12
DK/NS	31	17	13	-	18	11	7	-	12	6	6





Cayman Islands' 2021 Census Report



Table 5.12A: George Town/West Bay Population by Type of Health Insurance, Sex and Status, 2021, Percent

Type of Health Insurance	Total				Caymanian				Non-Caymanian			
	Total	Male	Female	DK/NS	Total	Male	Female	DK/NS	Total	Male	Female	DK/NS
George Town												
Total	100.0	100.0	100.0	100.0	100.0	100.0	100.0	100.0	100.0	100.0	100.0	100.0
Have Insurance	94.6	94.2	95.1	45.0	92.1	91.0	93.1	75.0	96.4	96.4	96.6	32.1
Covered by local provider	80.1	81.2	79.0	27.5	70.6	70.9	70.4	33.3	87.0	88.1	85.9	25.0
Covered by CI Government	13.0	11.6	14.5	15.0	20.3	19.0	21.4	41.7	7.7	6.6	8.9	3.6
Covered by overseas provider	1.5	1.5	1.5	2.5	1.2	1.2	1.2	-	1.7	1.6	1.8	3.6
Uninsurable	0.1	0.1	0.1	-	0.1	0.2	0.1	-	0.0	0.0	0.1	-
No Insurance	4.0	4.3	3.7	10.0	6.6	7.5	5.6	16.7	2.2	2.2	2.1	7.1
DK/NS	1.3	1.4	1.2	45.0	1.2	1.3	1.1	8.3	1.4	1.4	1.2	60.7
West Bay												
Total	100.0	100.0	100.0	100.0	100.0	100.0	100.0	100.0	100.0	100.0	100.0	100.0
Have Insurance	91.2	90.3	92.1	37.5	88.2	86.2	90.0	100.0	95.2	95.3	95.3	-
Covered by local provider	73.5	74.5	72.6	12.5	63.0	63.0	63.0	33.3	87.5	88.5	86.6	-
Covered by CI Government	16.5	14.6	18.4	25.0	24.6	22.7	26.4	66.7	5.7	4.8	6.8	-
Covered by overseas provider	1.2	1.2	1.2	-	0.6	0.5	0.6	-	2.0	2.1	1.9	-
Uninsurable	0.3	0.3	0.3	-	0.3	0.3	0.3	-	0.2	0.3	0.2	-
No Insurance	7.2	8.0	6.3	-	10.2	12.1	8.4	-	3.2	3.1	3.3	-
DK/NS	1.4	1.3	1.3	62.5	1.4	1.4	1.3	-	1.4	1.3	1.3	100.0





Table 5.12B: Bodden Town/North Side Population by Type of Health Insurance, Sex and Status, 2021, Percent

Type of Health Insurance	Total				Caymanian				Non-Caymanian		
	Total	Male	Female	DK/NS	Total	Male	Female	DK/NS	Total	Male	Female
Bodden Town											
Total	100.0	100.0	100.0	100.0	100.0	100.0	100.0	100.0	100.0	100.0	100.0
Have Insurance	93.0	92.3	93.8	55.6	93.1	91.9	94.3	50.0	92.8	93.3	92.3
Covered by local provider	67.0	67.6	66.5	44.4	63.8	63.6	64.0	50.0	75.0	76.6	73.4
Covered by CI Government	24.7	23.5	25.8	11.1	27.9	26.9	28.8	-	16.6	15.7	17.5
Covered by overseas provider	1.4	1.3	1.4	-	1.4	1.4	1.4	-	1.2	1.0	1.5
Uninsurable	0.5	0.6	0.3	-	0.5	0.6	0.3	-	0.4	0.5	0.3
No Insurance	5.2	5.7	4.7	22.2	5.4	6.4	4.5	33.3	4.7	4.1	5.3
DK/NS	1.3	1.4	1.2	22.2	1.0	1.1	0.9	16.7	2.1	2.1	2.1
North Side											
Total	100.0	100.0	100.0	100.0	100.0	100.0	100.0	100.0	100.0	100.0	100.0
Have Insurance	90.5	88.3	92.7	100.0	89.6	85.9	93.0	100.0	92.6	93.2	92.0
Covered by local provider	60.1	60.9	59.4	-	52.8	51.1	54.4	-	76.3	80.2	71.8
Covered by CI Government	29.4	26.4	32.4	100.0	36.1	33.9	38.0	100.0	14.7	11.4	18.7
Covered by overseas provider	1.0	1.1	0.9	-	0.7	0.8	0.6	-	1.6	1.6	1.5
Uninsurable	0.1	0.1	0.1	-	0.2	0.2	0.2	-	-	-	-
No Insurance	8.5	10.6	6.5	-	9.2	12.5	6.0	-	7.2	6.8	7.6
DK/NS	0.8	1.0	0.7	-	1.1	1.5	0.8	-	0.2	-	0.4



Cayman Islands' 2021 Census Report



Table 5.12C: East End/Sister Islands Population by Type of Health Insurance, Sex and Status, 2021, Percent

Type of Health Insurance	Total				Caymanian				Non-Caymanian		
	Total	Male	Female	DK/NS	Total	Male	Female	DK/NS	Total	Male	Female
East End											
Total	100.0	100.0	100.0	-	100.0	100.0	100.0	-	100.0	100.0	100.0
Have Insurance	82.9	82.1	83.6	-	78.0	77.2	78.6	-	90.7	89.2	92.4
Covered by local provider	56.4	58.4	54.5	-	41.7	43.0	40.5	-	79.9	80.7	79.0
Covered by CI Government	25.7	23.0	28.5	-	35.6	33.3	37.8	-	10.0	7.9	12.4
Covered by overseas provider	0.7	0.8	0.6	-	0.7	1.0	0.4	-	0.7	0.6	1.0
Uninsurable	0.4	0.3	0.5	-	0.5	0.4	0.5	-	0.3	0.3	0.3
No Insurance	13.5	14.5	12.5	-	17.3	18.3	16.4	-	7.5	9.1	5.7
DK/NS	3.2	3.0	3.4	-	4.2	4.1	4.4	-	1.5	1.4	1.6
Sister Islands											
Total	100.0	100.0	100.0	100.0	100.0	100.0	100.0	100.0	100.0	100.0	100.0
Have Insurance	95.0	94.9	95.1	100.0	94.5	93.9	95.0	100.0	95.9	96.6	95.3
Covered by local provider	42.5	43.5	41.4	100.0	33.0	31.8	34.0	100.0	59.8	65.4	54.5
Covered by CI Government	49.0	47.3	50.8	-	57.9	57.8	58.2	-	32.9	27.8	37.7
Covered by overseas provider	3.5	4.1	2.9	-	3.6	4.4	2.8	-	3.3	3.4	3.1
Uninsurable	-	-	-	-	-	-	-	-	-	-	-
No Insurance	3.6	3.5	3.7	-	4.2	4.4	4.0	-	2.4	1.7	3.1
DK/NS	1.4	1.7	1.2	-	1.3	1.7	1.0	-	1.6	1.7	1.6





The Page is intentionally left blank